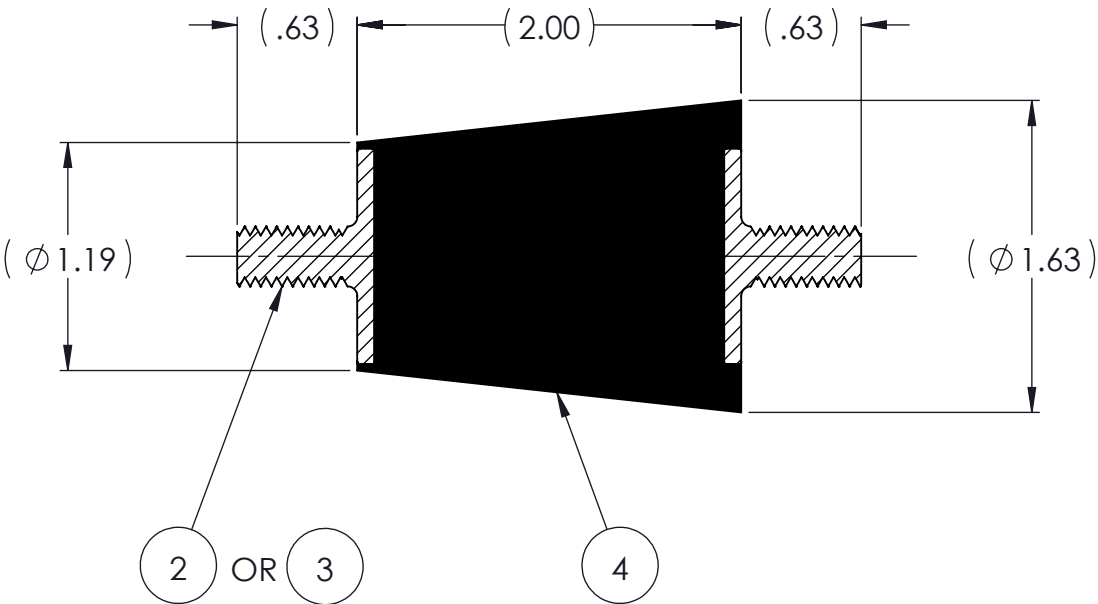
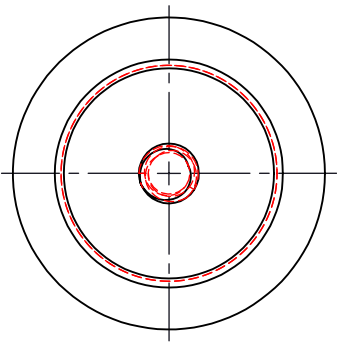
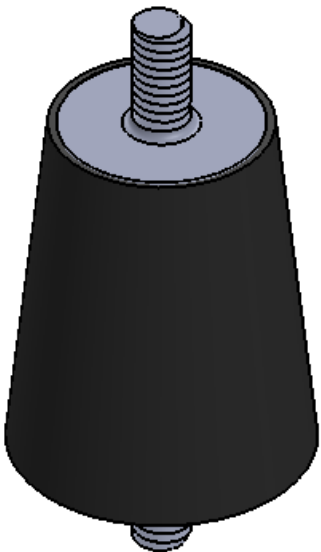


REVISIONS			
REV.	DESCRIPTION	DATE	APPROVED
1	INITIAL RELEASE OF DRAWING	8/13/2014	BS




NOTES:

- 1 MATERIAL: ELASTOMER AND DUROMETER OF 40, 50, 60 OR 70 TO BE SPECIFIED.
- 2 ALL DIMENSIONS ARE REFERENCE.
- 3 AVAILABLE IN THREADS OF 5/16-18 UNC X 5/8" AND M8 X 1.25 X 5/8".

AR	ELASTOMER	K32-4	1	4
2	MK430-M8-5/8	MK430-M8-5/8		3
2	MK430-CC	MK430-CC		2
	K32	K32		1
QTY.	DESCRIPTION	PART NUMBER	MATERIAL OR NOTES	ITEM

PROPRIETARY AND CONFIDENTIAL <small>THE INFORMATION CONTAINED IN THIS DRAWING IS THE SOLE PROPERTY OF KARMAN RUBBER. ANY REPRODUCTION IN PART OR AS A WHOLE WITHOUT THE WRITTEN PERMISSION OF KARMAN RUBBER IS PROHIBITED.</small>	SIGNATURE		DATE	UNLESS OTHERWISE SPECIFIED: DIMENSIONS ARE IN INCHES TOLERANCES: .X = .XX = ± 0.031 .XXX = ANGLES = ± 1° INTERPRET GEOMETRIC TOLERANCING PER: ASME Y14.5M-1994
	DRAWN	B. SENECA	08/13/2014	
	CHECK	S. BROWN	08/13/2014	
	ENGR	B. SENECA	08/13/2014	
	QA			
	STRESS			
	APPR			



KARMAN RUBBER
VIBRO-INSULATORS®
FOR CONTROLLING NOISE, SHOCK & VIBRATION

B	SIZE	CAGE CODE
	DO NOT SCALE DRAWING	

TITLE: K32 SERIES VIBRO-INSULATOR WWW.KARMAN.COM			
DWG. NO. K32		REV 1	
SCALE: 1:1	WEIGHT: 3.35 OZ.	SHEET 1 OF 1	